

finish options

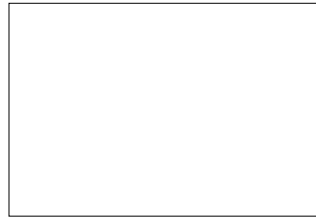
● standard finishes

● options

bases and frames



RAL 9005 black



RAL 9003 white



RAL 7047 grey



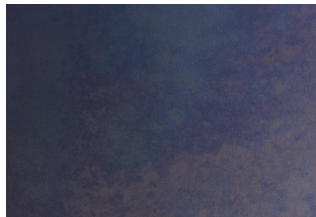
RAL 9006 silver



polished chrome



brushed stainless steel



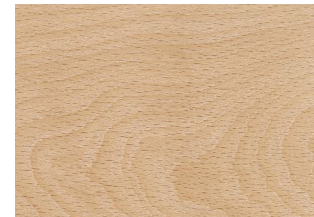
raw steel



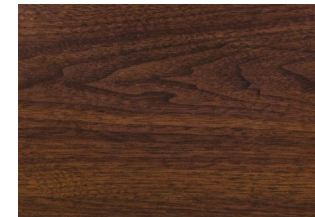
solid ash



solid oak



solid beech

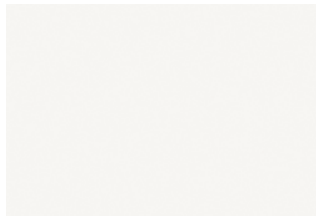


dark stained beech

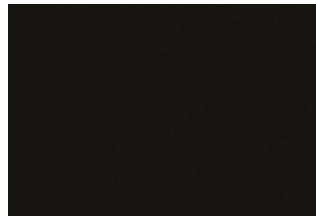


black painted beech

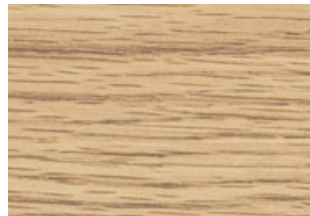
table tops



RAL 9005 black



black laminate



oak veneer



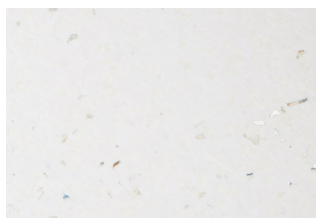
walnut veneer



white quartz



black quartz



Smile Plastics Alba